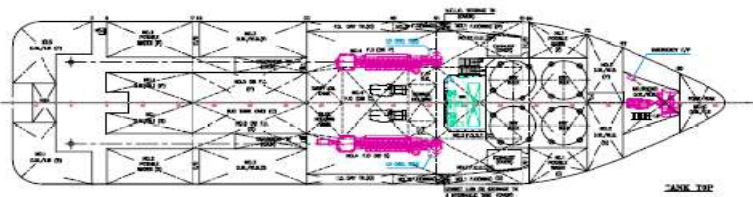
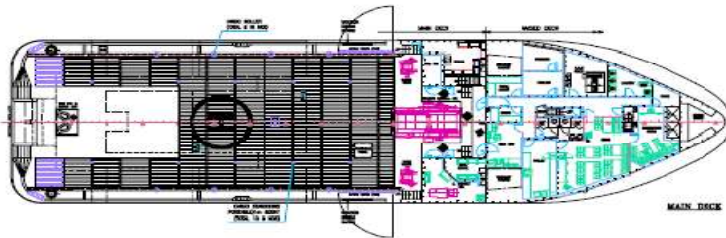
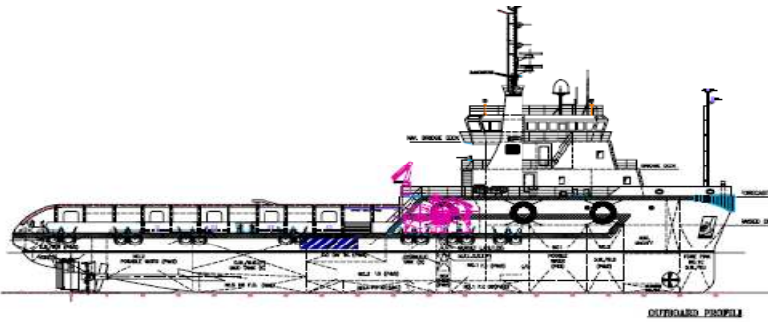


# 60M 4000BHP PLATFORM SUPPLY VESSEL



## TECHNICAL SPECIFICATION

### PRINCIPAL PARTICULARS

Length Overall	:	60.00	M
Breadth Moulded	:	16.00	M
Depth Moulded	:	5.50	M
Clear deck area	:	380	M2 (abt)
Speed	:	12.5	Knots (abt)
Classification	:	ABS +A1E Platform Support, Supply ,+AMS	

### MAIN MACHINERIES

Main Engines	:	2x1492KW MITSUBISHI S8U-MPTK	
Total Power	:	2x2000 HP	
Propulsion System	:	2 x CPP in nozzle ZF KH4-600	
Bow Thruster	:	6.0 T, CPP HRP 4008TT Diesel PM	
Generator	:	3 X 200 KW, 415/3PH/50Hz	
Emergency Generator	:	1 X 90kw, 415V/3PH/50Hz	
Steering Gears	:	2 x 7TM Electro Hydraulic	

### TANK CAPACITY

Fuel Oil Tank	:	530	M3
Fresh Water Tank	:	280	M3
Drill Water	:	730	M3
Lube oil	:	5.9	M3

### ACCOMMODATION

Single berth	:	6 X 1	Berth
Double berth	:	5 X 2	Berth
Four men berth	:	8 X 4	Berth
Total complement	:	48	Berth

### DISCHARGE RATES

Cargo Oil	:	1 X 100 M3/Hr @ 60m
Cargo FW	:	1 X 100 M3/Hr @ 60m
Drill Water	:	1 X 100 M3/Hr @ 60m

### NAVIGATION & COMMUNICATION EQUIPMENT

1 Main Radar, 96 NM	1 Secondary Radar, 64 NM
1 units GPS	1 Weather Fax Receiver
1 Echo Sounder	1 unit GMDSS extended packaged
1 Speed Log	Integrated Internal Communication System
1 Auto Pilot	3 sets Portable VHF Transceiver
1 Navtex Receiver	Ship Security Alert System

### DECK MACHINERIES

Tugger winch	:	MEP 2 X 0 T @15 m/min
Capstan	:	2 X 5 T @ 15 m/min
Anchor windlass	:	9 T @ 12 m/min
Provision Dk Crane	:	<a href="#">1x3T@1.7m reach-Option</a>

### EXTERNAL FIRE FIGHTING EQUIPMENT

Fire Fighting Connection	:	1 X 4-way delivery head
Fire Hose	:	8 X 15 m hose c/w coupling and nozzle
Fire Hydrant	:	8 X 65 mm
Fireman's Outfit	:	2 sets
Dry Chemical Powder	:	2 X 5 Kg / 6 X 10 Kg
Fire Extinguisher	:	1 X 45 Ltr / 4 X 9 Ltr
CO2 Extinguisher	:	2 X 9 Ltr

### LIFE SAVING EQUIPMENT

Rescue Boat	:	1 X 6 persons
Liferaft	:	As per Solas reqt persons
Lifebuoy	:	8 sets c/w throwing apparatus
Lifejacket	:	28 sets
Breathing apparatus	:	2 sets c/w recharging compressor
Immersion suit	:	4 sets

Information on the specification are approximate only.They are subject to final changes